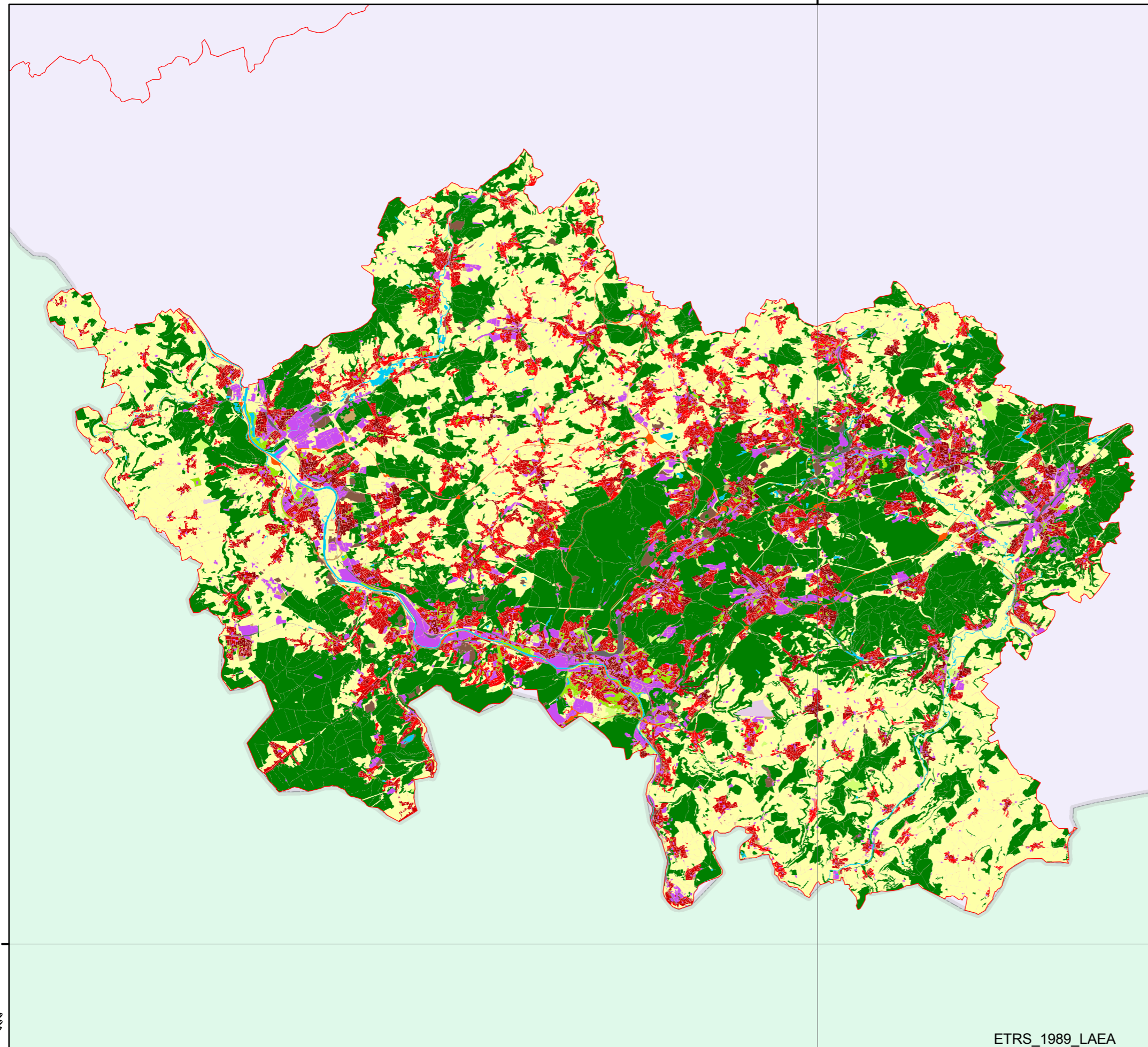


# URBAN ATLAS - DE040L-Saarbrücken

4114140 2722222



### Legend

|  |  |
|--|--|
|  | 11100: Continuous Urban fabric (S.L. > 80%)                        |
|  | 11210: Discontinuous Dense Urban Fabric (S.L.: 50% - 80%)          |
|  | 11220: Discontinuous Medium Density Urban Fabric (S.L.: 30% - 50%) |
|  | 11230: Discontinuous Low Density Urban Fabric (S.L.: 10% - 30%)    |
|  | 11240: Discontinuous very low density urban fabric (S.L. < 10%)    |
|  | 11300: Isolated Structures   |
|  | 12100: Industrial, commercial, public, military and private units  |
|  | 12210: Fast transit roads and associated land                      |
|  | 12220: Other roads and associated land                             |
|  | 12230: Railways and associated land                                |
|  | 12300: Port areas  |
|  | 12400: Airports  |
|  | 13100: Mineral extraction and dump sites                           |
|  | 13300: Construction sites  |
|  | 13400: Land without current use                                    |
|  | 14100: Green urban areas   |
|  | 14200: Sports and leisure facilities                               |
|  | 20000: Agricultural, semi-natural and wetland areas                |
|  | 30000: Forest  |
|  | 50000: Water   |

mars 22, 2010

2891036 077778

2891036 077778

ETRS\_1989\_LAEA

4114140 2722222

